

DIECI
AMERICAS
TELEHANDLERS



AGRI PIVOT

T70 | T80



dieci-americas.com

PERFORMANCE		
Vehicle model	AGRI PIVOT T70	AGRI PIVOT T80
Operating weight with standard bucket and quick coupling	18453 lb (8370 kg)	19643 lb (8910 kg)
Standard bucket capacity	42 ft³ (1.2 m³)	42 ft³ (1.2 m³)
Maximum capacity	6600 lb (2994 kg)	7700 lb (3493 kg)
Maximum lifting height	17.1 ft (5.2 m)	17.1 ft (5.2 m)
Maximum horizontal extension	10.8 ft (3.3 m)	10.8 ft (3.3 m)
Fork swiveling angle	165°	165°
Pull-out force	13489 lbf (6000 daN)	14500 lbf (6450 daN)
Towing force	14950 lbf (6650 daN)	14950 lbf (6650 daN)
Unladen weight	16976 lb (7700 kg)	18387 lb (8340 kg)
Maximum climb angle	80 %	80 %
Max speed (referred to wheels with maximum permitted diameter)	24.9 mph (40 km/h)	24.9 mph (40 km/h)
Retracted in line tipping load	9921 lb (4500 kg)	11685 lb (5300 kg)
Retracted articulated tipping load	8818 lb (4000 kg)	10362 lb (4700 kg)
Extended in line tipping load	5512 lb (2500 kg)	5181 lb (2350 kg)
Extended articulated tipping load	5071 lb (2300 kg)	4630 lb (2100 kg)
Operating load EN474.3 (80%) retracted	6614 lb (3000 kg)	7716 lb (3500 kg)
Operating load EN474.3 (60%) retracted	5071 lb (2300 kg)	6173 lb (2800 kg)
Operating load EN474.3 (80%) extended	3858 lb (1750 kg)	4409 lb (2000 kg)
Operating load EN474.3 (60%) extended	2976 lb (1350 kg)	3307 lb (1500 kg)

BOOM		
Vehicle model	AGRI PIVOT T70	AGRI PIVOT T80
Getting off the basket	3 s	3.9 s
Lifting	5.2 s	4.1 s
Extension	3.1 s	2.4 s
Retraction	1.8 s	2.2 s
Forward swiveling	3.2 s	1.8 s
Reverse swiveling	2 s	2 s

ENGINE		
Vehicle model	AGRI PIVOT T70	AGRI PIVOT T80
Brand	Perkins	FPT
Nominal power	115 HP (85.9 kW)	138 HP (103 kW)
@rpm	2200 rpm	2200 rpm
Peak power	115 HP (85.9 kW)	153 HP (114 kW)
@rpm	2200 rpm	1800 rpm
Operation	4-stroke	4-stroke
Injection	Electronic, Common Rail	4-Stroke Electronic Injection, Common Rail
Number and arrangement of cylinders	4, Vertical in line	4, Vertical in line
Displacement	221 in³ (3621 cm³)	274 in³ (4485 cm³)
Consumption	355.32 lb/Hp h (216 g/kWh)	348.74 lb/Hp h (212 g/kWh)
@rpm	1900 rpm	2200 rpm
Emission standards	Stage V/Tier 4f	Stage V
Exhaust gas treatment	DOC+DPF+SCR (with AdBlue)	DOC+SCRoF (with AdBlue)
Cooling system	Liquid	Liquid
Intake	16-valve turbocharger with aftercooler	16-valve turbocharger with aftercooler
Air filter	Air pre-heating and air pre-filtering with dust separator	Air pre-heating and air pre-filtering with dust separator

TRANSMISSION		
Vehicle model	AGRI PIVOT T70	AGRI PIVOT T80
Transmission type	Electronically controlled hydrostatic Shift on Fly with gear shift in motion and ECO function	Electronically controlled hydrostatic Shift on Fly with gear shift in motion and ECO function
Hydraulic motor	Hydrostatic with continuous automatic adjustment	Hydrostatic with continuous automatic adjustment
Reversal	With electronic control	With electronic control
Inching	With electronic pedal for controlled forward movement	With electronic pedal for controlled forward movement
Gearbox	With 2-speed servo-controlled operated with vehicle in motion	With 2-speed servo-controlled operated with vehicle in motion

DIFFERENTIAL AXLES		
Vehicle model	AGRI PIVOT T70	AGRI PIVOT T80
Type of axles	2 rigid, with 4 epicycloidal reduction gears	2 rigid, with 4 epicycloidal reduction gears
Type of steering	With articulated chassis with a total angle of 80°, servo-assisted by power steering (Load Sensing)	With articulated chassis with a total angle of 80°, servo-assisted by power steering (Load Sensing)
Front axle	Rigid, self-locking	Rigid, self-locking
Rear axle	Tilting with 20° total stroke	Tilting with 20° total stroke
Service braking	Oil bath with servo brake on front and rear axle	Oil bath with servo brake on front and rear axle
Parking braking	Negative actuation with electrical control	Negative actuation with electrical control

HYDRAULIC SYSTEM

Vehicle model	AGRI PIVOT T70	AGRI PIVOT T80
Hydraulic pump type	Gear pump for power steering and movements	Piston pump with variable flow rate for power steering and movements
Hydraulic pump capacity	30.9 gal/min (117 l/min)	59.2 gal/min (224 l/min)
Max. operating pressure	3626 psi (25 MPa)	3771 psi (26 MPa)
Distributor control	4in1 with FNR	4 in 1 Joystick with FNR
Distributor type	Hydraulic in 4 sections with "Load Sensing" proportional electronic-hydraulic servo-control with "Flow Sharing", 4 simultaneous movements with independent maximum speed control of each movement.	Hydraulic in 4 sections with "Load Sensing" proportional electric control with "Flow Sharing", 4 simultaneous movements with independent maximum speed setting of each movement, continuous oil function on hydraulic sockets.

FILLING

Vehicle model	AGRI PIVOT T70	AGRI PIVOT T80
Hydraulic system (total)	42.27 gal (160 l)	42.27 gal (160 l)
Diesel tank	36.98 gal (140 l)	36.98 gal (140 l)
AdBlue tank	7.13 gal (27 l)	7.13 gal (27 l)

TOWING CAPACITY

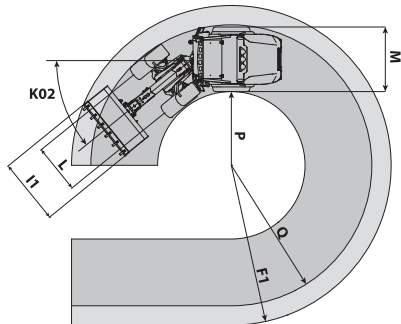
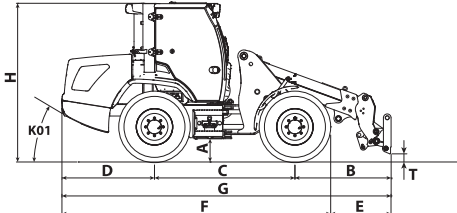
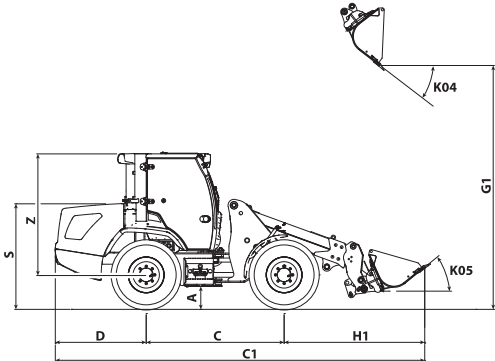
Vehicle model	AGRI PIVOT T70	AGRI PIVOT T80
Unbraked trailer	6614 lb (3000 kg)	7716 lb (3500 kg)
Inertia braking	13228 lb (6000 kg)	13228 lb (6000 kg)
Hydraulic/pneumatic braking	33069 lb (15000 kg)	44092 lb (20000 kg)

TYRES

Vehicle model	AGRI PIVOT T70	AGRI PIVOT T80
Standard tires	405/70-24"	405/70-24"

DIMENSIONS

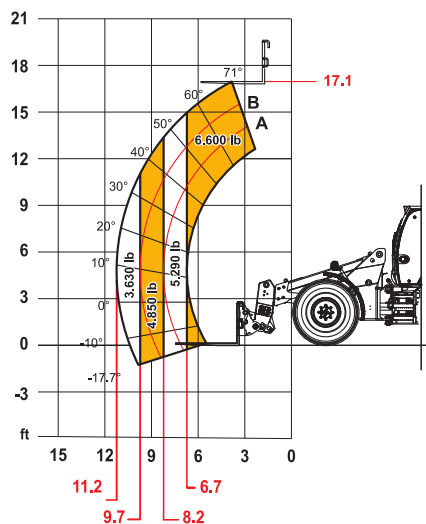
Vehicle model	AGRI PIVOT T70	AGRI PIVOT T80
A	15.2 in (385 mm)	15.2 in (385 mm)
B	66.5 in (1690 mm)	67.7 in (1720 mm)
C	95.5 in (2425 mm)	100.4 in (2550 mm)
C1	258.7 in (6570 mm)	267.7 in (6800 mm)
D	61.8 in (1570 mm)	66.1 in (1680 mm)
E	40.9 in (1040 mm)	44.5 in (1130 mm)
F	182.9 in (4645 mm)	189.8 in (4820 mm)
F1	203.3 in (5165 mm)	209.8 in (5330 mm)
G	223.8 in (5685 mm)	234.3 in (5950 mm)
G1	173.2 in (4400 mm)	173.2 in (4400 mm)
H	105.5 in (2680 mm)	106.7 in (2710 mm)
H1	101.4 in (2575 mm)	101.4 in (2575 mm)
I1	82.7 in (2100 mm)	82.7 in (2100 mm)
L	70.5 in (1790 mm)	70.5 in (1790 mm)
K01	30°	30°
K02	40°	40°
K04	40°	40°
K05	40°	40°
M	86.6 in (2200 mm)	86.6 in (2200 mm)
P	91.7 in (2330 mm)	97.2 in (2470 mm)
Q	180.3 in (4580 mm)	186.2 in (4730 mm)
S	76.2 in (1935 mm)	75.8 in (1925 mm)
T	6.3 in (160 mm)	6.3 in (160 mm)
Z	82.7 in (2100 mm)	82.7 in (2100 mm)



MAX
6600 lb



00010001300



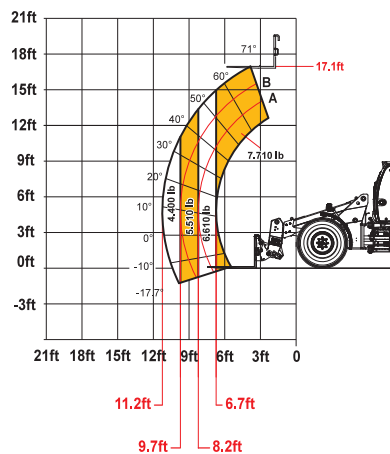
EN474-3

T70

MAX
7700 lb



DOC10002272



EN474-3

T80